

Fishing Journal

Information For The Serious Angler

by John Martinis

September 2015

Fishing Dates

Area 7
August 1-Sept 30
Limit 2 Salmon
+2 Pinks
Only 1 Chinook
Release wild Coho & Chum

Area 8-1
August 1-Sept 30
Release Chinook
Limit 2 Salmon
+ 2 Pinks

Area 8-2
August 1-Sept 30
Release Chinook
Limit 2 Salmon
+ 2 Pinks

Tulalip
Terminal Fishery
Closed

Area 9
Until Sept 30
Two Salmon Limit
Release Chinook & Chum
+ 2 Pinks

Area 10
Sept. 1-Sept 30
Limit 2 Salmon
+2 Pinks
Release Chinook
Read Special Rules

Shop Online at
John's Sporting Goods
shop.johnsportinggoods.com

This Issue

Coho Derbies p.1
John's Seminar p.1
Coho Techniques p.1
Coho Rigs p.2
Snohomish River p.3
River Pinks Techniques p.4
John's Web Page Facelift p.4
New Map Edmonds Coho p.6

Coho Seminar
September 18, 2015
By John Martinis
at Bayside Marine
7PM

"High Percentage Coho Fishing"

John Martinis will be presenting his very popular Coho Seminar at Bayside Marine. The public is invited to the seminar. There is no charge for the seminar. Spend an hour with John Martinis and Mike Greenleaf discussing how to be a successful Coho Angler.

The Everett Stealhead and Salmon Club will have a raffle for a Scotty Pot Puller, and some other great fishing tackle at the conclusion of this seminar.

[Directions to Bayside Marine](#)

Everett Coho Derby
September 19-20
Tickets \$30
1st Prize \$10, 000
2nd Prize \$5000
3rd Prize \$2500
4th Prize \$1000

[More Information](#)

Tickets available at John's
Sporting Goods

**Edmonds Coho
Derby**

September 12
1st Prize \$5000

[More Information](#)

Tickets available at John's
Sporting Goods

**Winning Coho
Fishing Derbies
Advanced Fishing
Techniques**

Before we begin talking about Coho fishing fundamentals and accompanying advanced methods, there must be an understanding about

Just Fishing



where these fish go and what path is taken on a journey to their river of final destination. Once we recognize where these fish go, there can be a better understanding about methods for intercepting migrating Coho.

Puget Sound is a complex system fed by multiple of tributaries. These include the: Snohomish River; Skagit River; Nisqually River; Puyallup River; Green River; Skagit River; Stillaguamish River and others making up smaller river systems. The uniqueness of each river is the capacity to produce Coho runs arriving at different time intervals. I presume this is Mother Nature's way of stockpiling Coho in one river system in case of a catastrophic failure in another river system. Saltwater anglers can take advantage of these diverse Coho runs by fishing different areas in Puget Sound. If Coho fishing was simple, we would go to the West side of Possession Bar, fish the rips in September and come home with limits of Coho. No such luck!

There are six major areas in Puget Sound where Coho school-up to feed before heading to their ultimate destination. These include: [Possession Bar](#) both East and West Side; [Edmonds/Point Wells](#); [Point Wells](#); [Point No Point](#); [Shipwreck near Mukilteo](#); [Shilshole/Richmond Beach](#) and [Jeff Head](#). Coho at Possession Bar are a mix heading to every river system in Puget Sound. Coho at Edmonds to Point Wells are most likely heading to South Puget Sound and into the rivers feeding into Lake Washington. Coho at the shipwreck are generally headed to the Snohomish River system. Coho

schooling in the Shilshole area are headed to either: the ship canal; Lake Union; Lake Washington with some going to Lake Sammamish. Coho at Jefferson Head are making their way to rivers draining into the southernmost end of Puget Sound. This might appear too complicated when trying to figure out where to fish and how deep to fish. Making things worse is trying to figure which tide to fish and what fishing tackle to use.

Here's what I can and cannot do for you. I can help solve the problem about where and what tackle to use in addition to what depth to fish. When I can't do is make the fish swim to your favorite fishing hole at the precise time when you plan on fishing. The modern Puget Sound angler requires the ability and knowledge to effectively fish different areas of the Sound. Without this desire, your fishing success will be constrained to small windows of opportunity. With that said, let's get started!

When Puget Sound Coho first enter Admiralty Inlet, they pass through Lagoon Point and Bush Point before eventually slowing down near Point no Point and Possession Bar. These two areas are major feeding zones for Puget Sound Coho. In fact, this presents key fish catching opportunities for Coho anglers. However, don't decide to fish these areas just because ol' John said fishing was hot two days ago. Tides control where the fishing is hot or not so hot. A favorite place to fish for early September Coho is the West side of Possession Bar only when the tide is going out. Point no Point is another fishing area where Coho fishing is

good only when the tide is going out. Needless, it is recommended to consult a tide table before heading out.

When the tide is coming in early in September, I prefer to fish for Coho on the east side of Possession Bar. There two locations for locating fish here on the east side. First, is an area just east of the Possession Point Buoy in 250 to 400 feet of water and the second is on the southeast corner. There is an indent in the bar on the southeast corner that runs east and west. This holds bait and is a big attraction for hungry salmon.

Here are some areas in Puget Sound where Coho school-up and tide movement is not a key factor for influencing fishing success.

Edmonds/Point Wells Shipwreck Shilshole/Richmond Beach

Effective Rigs for Coho

- [Gibbs 11" Red Racer Flasher](#)
- [Gibbs 11" Purple Haze Flasher](#)
- [Goldstar OAL12R 3.5 Octopus Squid](#)
- [Goldstar OG142R 3.5 Octopus Squid](#)
- [Goldstar Ace Hi Fly Needlefish #312 Purple Haze](#)
- [#6 Round Glow Beads](#)
- [30 pound Pline Fluorocarbon Leader](#)
- [5/0 Black Gamakatsu Octopus Hooks](#)

If you're tying your own squid leaders, tie the leaders with 5/0 black Gamakatsu octopus hooks on 30 pound Pline fluorocarbon leader material. Tie the first hook on the

Just Fishing



leader material, then slip two #6 glow beads down the leader until they rest against the first hook. Now tie the second hook onto the leader material only ½ inch from the bend of the first hook. Cut the leader off exactly at 40 inches with the idea that when tied to the flasher, it will be 36 inches long. If you prefer a longer leader, cut the leader four inches longer than you intend for the final leader length. Slip a Goldstar #312 Needlefish Ace Hi Fly down the leader until it rests against the hook. Now slip either a Goldstar OAL12R 3.5 Octopus or a Goldstar OG142R 3.5 Octopus squid down the leader until the Ace Hi Fly nestles inside the squid. Tie the squid to the fat end of the flasher. Snap the flasher to your line using a Sampo X3CB Sampo ball bearing snap swivel.

If you do not tie your own hooks, John's Sporting Goods has [pre-tied Squid leaders custom tied for us by Busby Tackle](#). The leaders are tied with 30lb leader, two 5/0 Black Gamakatsu Hooks with two glow beads between the hooks. We also have barbless squid leaders tied with 5/0 Nickel Gamakatsu Hooks.

The Coho rig is almost ready. One of the most important items that MUST be put on the front hook is a strip of herring. I never go Coho fishing without herring strips. Ever! It is extremely important to prepare herring strips so they are ready to fish. The night or day before you go fishing, fillet strips off of a 6 to 7 inch herring. Fillet the herring like you do a salmon and then cut the strips in half the long way. Put the strips in a small plastic tray flesh side up and put lots of rock salt on the strips. By the time you go

fishing the next day, the strips will be cured and they will stay on the hook. Put the herring fillet on the top hook. Watch this video on [preparing herring strips](#).

Trolling Speed for Coho

The correct trolling speed for Coho is fast. I would recommend trolling at least 3.0 mph depending on which direction the current is moving. If you are trolling with the current there is only one good indicator for trolling the correct speed; make sure your downrigger cable has a severe angle to it. Most often it is easier to troll the correct speed by watching the angle of the cable.

Fishing Depths for Coho

Trying to predict the correct depth to fish for Coho from year to year is much too difficult to predict. Last year I was catching most my Coho at 65 feet. The year before, I was catching most my Coho at 180 feet. However, most years it is safe to predict that the fish will be at 65 feet. At daylight it is common to catch Coho at 30 feet. Much like fishing for Pink salmon, drop your fishing depth by 10 feet every hour. When I make reference to fishing 65 feet deep, I am referring to the actual fishing depth not the depth of the water. By 11 AM it is very common to find Coho from 90 to 120 feet deep. The actual depth of the water can be anywhere from 200 to 400 feet deep and much deeper.

Time of Day for Good Coho Fishing

The time of day for good Coho fishing is another one of those items that

varies from year to year. As a good rule of thumb, the very best fishing is from daylight until 11 AM. After 11 AM Coho fishing can be very challenging. Last year the late afternoon fishing was pretty darn good. But I wouldn't count on that every year. If you get out on the water early you increase your fishing odds exponentially in your favor!

Let's recap the big picture items for Coho Fishing

- Gibbs Flasher, Red Racer or Purple Haze 11" Flasher
 - Goldstar OAL12R 3.5 Squid
 - Goldstar OG142R 3.5 Squid
- 30lb Pline Fluorocarbon Leader 32-36 inches
 - 5/0 Black Gamakatsu Hooks
 - Use salted Herring strips
- Fish 35 feet at Daylight, 65 feet by 8AM
 - Trolling speed 3.0 or greater

Snohomish River Pinks

The big rainstorm on August 29 provided Pink salmon the relief that they needed to begin their ascent up the local rivers. The rain brought cooler water temperatures and filled the rivers with much-needed water for salmon spawning. Along with cooler water temperatures and increased flows, this brings good angling opportunities in the Snohomish River and sloughs.

A little more than 1 million Pink salmon were predicted to enter the Snohomish River this year. If only half that number (500,000) enters the

Just Fishing



Snohomish River, imagine how good the fishing is going to be the entire month of September.

If you're planning on fishing from the beach along the shores of the Snohomish River, be prepared for fairly steep bank access. The lower Snohomish River essentially has very little in the way of gravel bars. Most of the river bank is fairly steep or rock riprap Bank that makes access very steep at high tide and a little more accessible at low tide. Nevertheless, there are good places to fish along [Lowell Snohomish River Road](#). At the beginning of Lowell Snohomish River Road near Everett there is a park named [Rotary Park](#). Rotary Park has a boat launch (\$7), picnic facilities and some bank access to fish from. A word of caution; at low tide it is difficult to get your boat in or out of the water at the Rotary Park boat launch. If you want to figure out when high tide is at Rotary Park or most of the Snohomish River, use the Seattle tide tables and add one hour.

Casting and jigging gear for the Snohomish River

- [1/8 ounce Danielson Pink Jigs](#)
 - 3/8 ounce Pink Jigs
 - Size #2 Pink Buzz Bombs
 - Size #2.5 Pink Buzz Bombs
 - 2.0 Goldstar Pink Squid
 - #4 Red Beads
 - #10 Black Swivel

Note: there are several alternative brands of rigs that look identical to Buzz Bombs for half the price. We offer those alternatives at John's Sporting Goods.

Trolling gear for the Snohomish River

- [#4 Pink Dick Nite Spoons](#)
- [#4 Pink Dick Nite Spoons](#)
- 1/2 ounce trolling sinker or cannon ball weight

If you're going to cast 1/8 ounce or 3/8 ounce pink jigs the fishing method is fairly straightforward: cast the jig and let it drop to within a foot or two of the bottom, then twitch the jig and reel. Don't aggressively jig the pink jigs because you will be moving the jigs to quickly in order for the fish to easily grab the jig. Rig these jigs with a leader that is 12 inches long and tie a #10 black swivel between the leader and the mainline.

Rigging Buzz Bombs and their alternatives: Buzz bombs must be rigged with a single hook. The best hook to use is a #1 Gamakatsu siwash hook. Crimp the eye on the siwash hook and tie 12 inches of 10lb leader material to the hook. Slide a #4 red bead down the leader. Now slide a 2.0 Goldstar Pink Squid down the leader. Now slide a #4 red bead down the leader until it rests on top of the Pink Squid. Slide the Buzz bomb down the leader. Tie a #10 black barrel swivel to the leader and tie the fishing line to the other eye of the swivel.

Cast the Buzz bomb out into the River and let it drop to within a foot or two of the bottom. The Buzz bomb needs to be moved more quickly than the smaller jigs only because it weighs more. With every jigging motion you need to crank a couple turns on the reel keep the Buzz bomb off the bottom. Work the Buzz bomb right to the shoreline because often Pink salmon will be following the Buzz bomb as you are jigging and reeling.

Rigging Dick Nite Spoons for trolling: There are two ways to rig Dick Nite Spoons and both ways are equally

effective. Tie a 1/2 ounce trolling weight to the end of the fishing line. On the other end of the trolling sinker tie a 4-6 foot leader. At the end of the leader tie on the Dick Nite Spoon.

An alternate way to rig a Dick Nite Spoon: Put a Slydo on to the fishing line. Slip a #4 red bead on to the line. Now tie the line to a #10 black barrel swivel. Tie a 12 inch leader dropper to the snap on the Slydo and attach a 1/2 ounce cannon ball sinker to the other end of the dropper line. Now tie a 4-6 foot leader to the #10 black barrel swivel. Tie the Dick Nite Spoon to the end of the leader.

Major Changes to John's Sporting Goods Web Site in September

The John's Sporting Goods web page and e-commerce site are going to have a major facelift in September. I believe that you will like the changes. Both of the web pages will be more phone friendly, tablet friendly and significantly faster. With this change you will access John's Sporting Goods Facebook, e-commerce and all the usual maps and Newsletters all from the home page. The new graphics that make up the home page are stunning. You will be able to get all the fishing content that I produce, order your tackle all from one place.

With these new changes you may lose some of your bookmarks to your favorite maps, products or Newsletters. I am hoping that there will be re-directs to most of those bookmarks. These changes will be worth it in the long run for all of us who enjoy fishing and for access to all the content that I provide for free for all of you. Thank you for your patience and thank you for shopping at John's Sporting Goods.

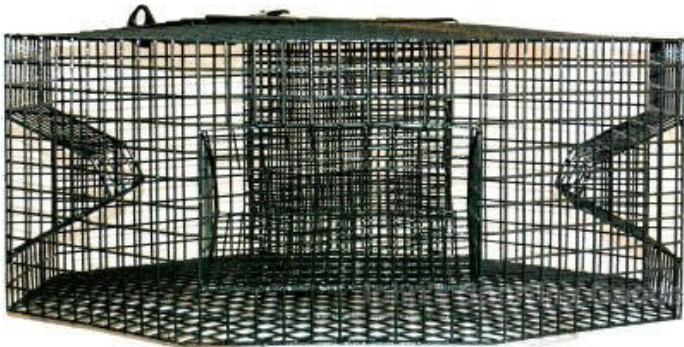
Special Purchase



Tackle For The Serious Angler

Special Purchase

Back in Inventory Now!



**All Shrimp Pots in Stock
Include 600ft 1/4" Leaded Rope
One 11" Yellow Buoy
Sale Price \$99.50**



**600ft 1/4" Leaded Rope
Special Price \$39.95
Reg. Price \$59.95**



**Shimano TDR Salmon Rod
\$23.50
Reg. Price \$29.95**



**Okuma CLX 300 Salmon Reel
Sale Price \$29.50
Reg. Price \$39.50**

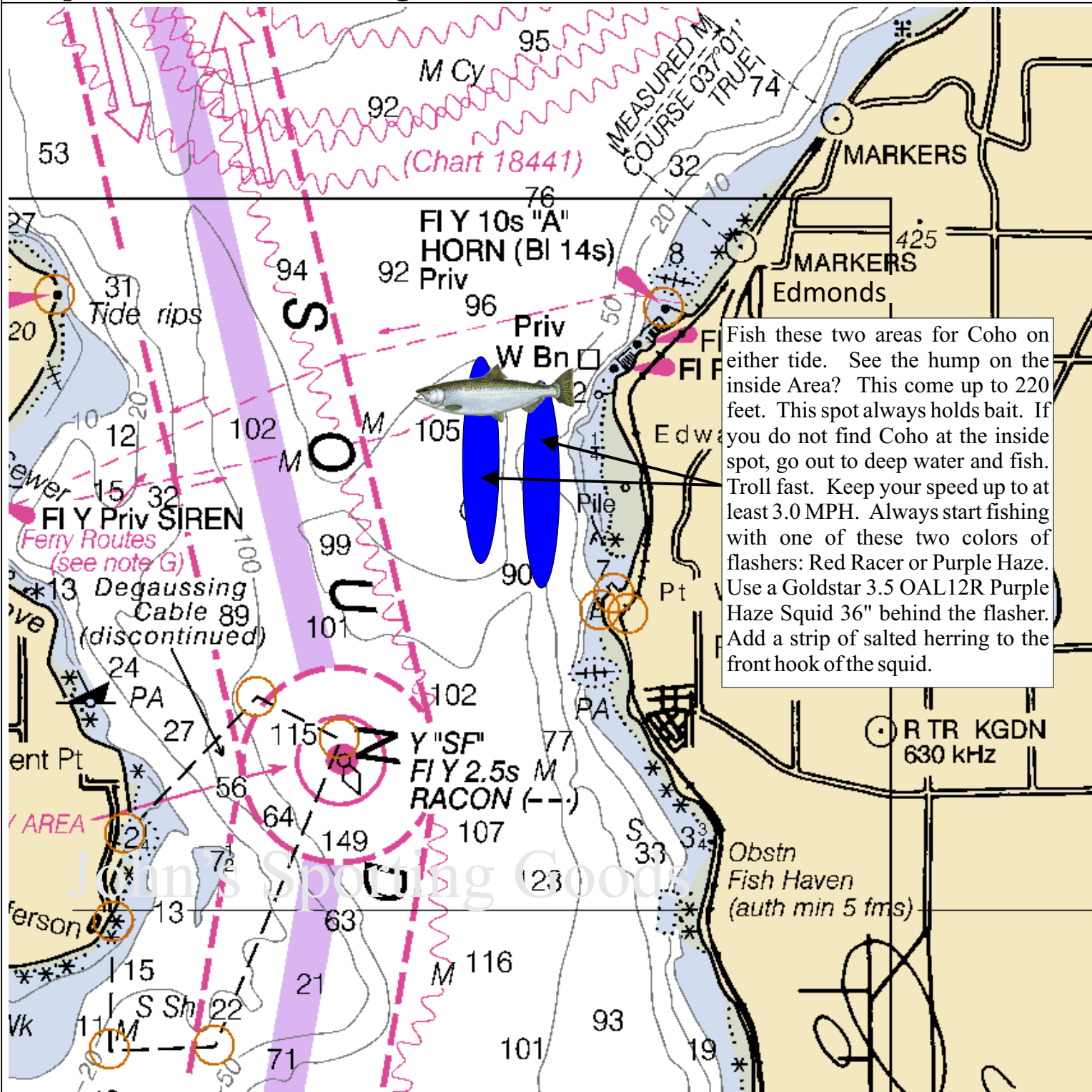
Prices Good Through September 30th, In-Store Purchase Only

John's Sporting Goods

Fishing Maps



Maps For The Serious Angler



Edmonds Coho

January	Feb	March	April	May	June	July	August	Sept	Oct	Nov	Dec
							Coho	Coho	Coho		

Coho Seminar
September 18, 2015
By John Martinis

“High Percentage Coho Fishing”

John Martinis will be presenting his very popular Coho Seminar at Bayside Marine. The public is invited to the seminar. There is no charge for the Seminar. Spend an hour with John Martinis and Mike Greenleaf discussing how to be a successful Coho Angler.

The Everett Stealhead and Salmon Club will have a raffle for a Scotty Pot Puller, and some other great fishing tackle at the conclusion of this seminar.

September 18 @ 7:00 PM
Coho Seminar at Bayside Marine
1111 Craftsman Way
Everett, WA 98201



John's Sporting Goods

1913 Broadway

Everett, WA 98201

20% Discount on your next in-store purchase

Items that are excluded: Downriggers, Ace Line Hauler Products, Traxtech Products, Rods and Reels, Electronics, CTO3R Crab Pot, SMI Crab Pots & Shrimp Pots, Braided Line, items that are discounted, on sale, repairs, parts and closeout items. Cannot be used in combination with discounted gift certificates.

10% Discount

Rods and Reels

Excludes G-Loomis, St Croix, Daiwa Electric Reels, SMI Shrimp and Crab Pots

Not valid for online purchases or mail order

Valid only with coupon at the time of sale

Expires September 30, 2015

You Must have this coupon in your hand at the time of

Send your fish pictures to:

customerservice@johnssportinggoods.com

Like us on Facebook:

http://www.facebook.com/?ref=tn_tnmn#!/pages/Johns-Sporting-Goods/166123680152608



**Scotty Downrigger
Maintenance
300ft Cable
or
300ft Spectra Braid
\$55**

Included in the price is new brake pads, your choice of 300' of 150lb. Cable or 300' 200lb. of Cortland spectra downrigger line, cleaning and lubricating the downrigger.

Coupons and discounted gift certificates cannot be used for this service

**John's Sporting Goods
Facebook**

Thursday: Big Fish Day

Friday: Deal of the Day

**Scotty Downrigger Deal
Exclusive at
John's Sporting Goods**

**Scotty 1106
Guide Series**

**Installed with
300ft 200lb Braided Spectra
#1148 Ball hook
#371 Scotty Snubber
\$525**

**Standard Scotty 1106
\$473**

Fishing Tackle-Crabbing Supplies-Shrimping Supplies

Store Hours: 9:00AM - 5:30PM Monday - Saturday
425-259-3056 - 1913 Broadway, Everett, WA 98201

**John's Sporting Goods
Fishing Tackle
for
The Serious Angler**