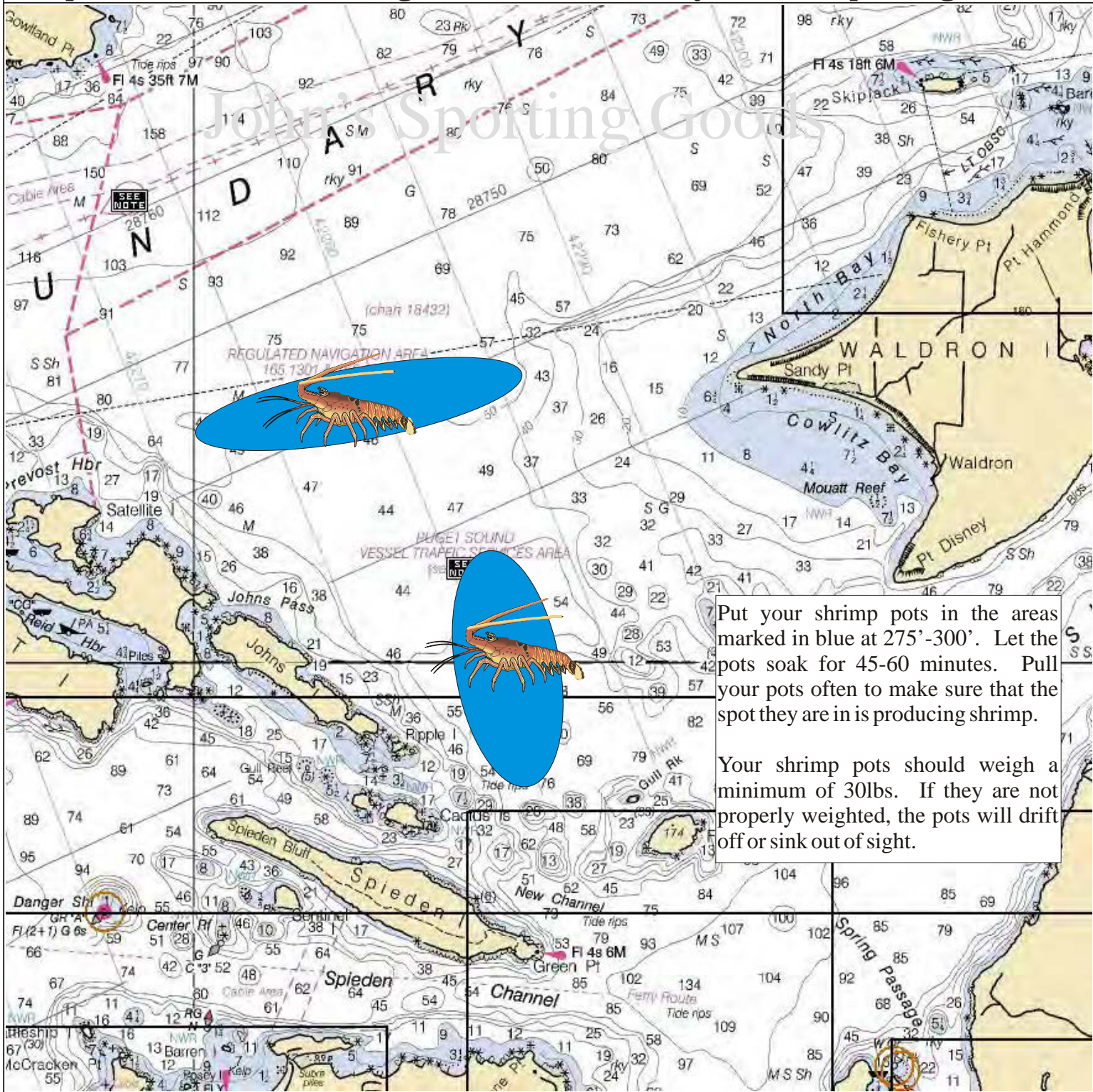


# Fishing Maps



Maps For The Serious Angler

by John's Sporting Goods



Put your shrimp pots in the areas marked in blue at 275'-300'. Let the pots soak for 45-60 minutes. Pull your pots often to make sure that the spot they are in is producing shrimp.

Your shrimp pots should weigh a minimum of 30lbs. If they are not properly weighted, the pots will drift off or sink out of sight.

## Waldron Island Spot Shrimp

January	Feb	March	April	May	June	July	August	Sept	Oct	Nov	Dec
				Shrimp	Shrimp	Shrimp	Shrimp				