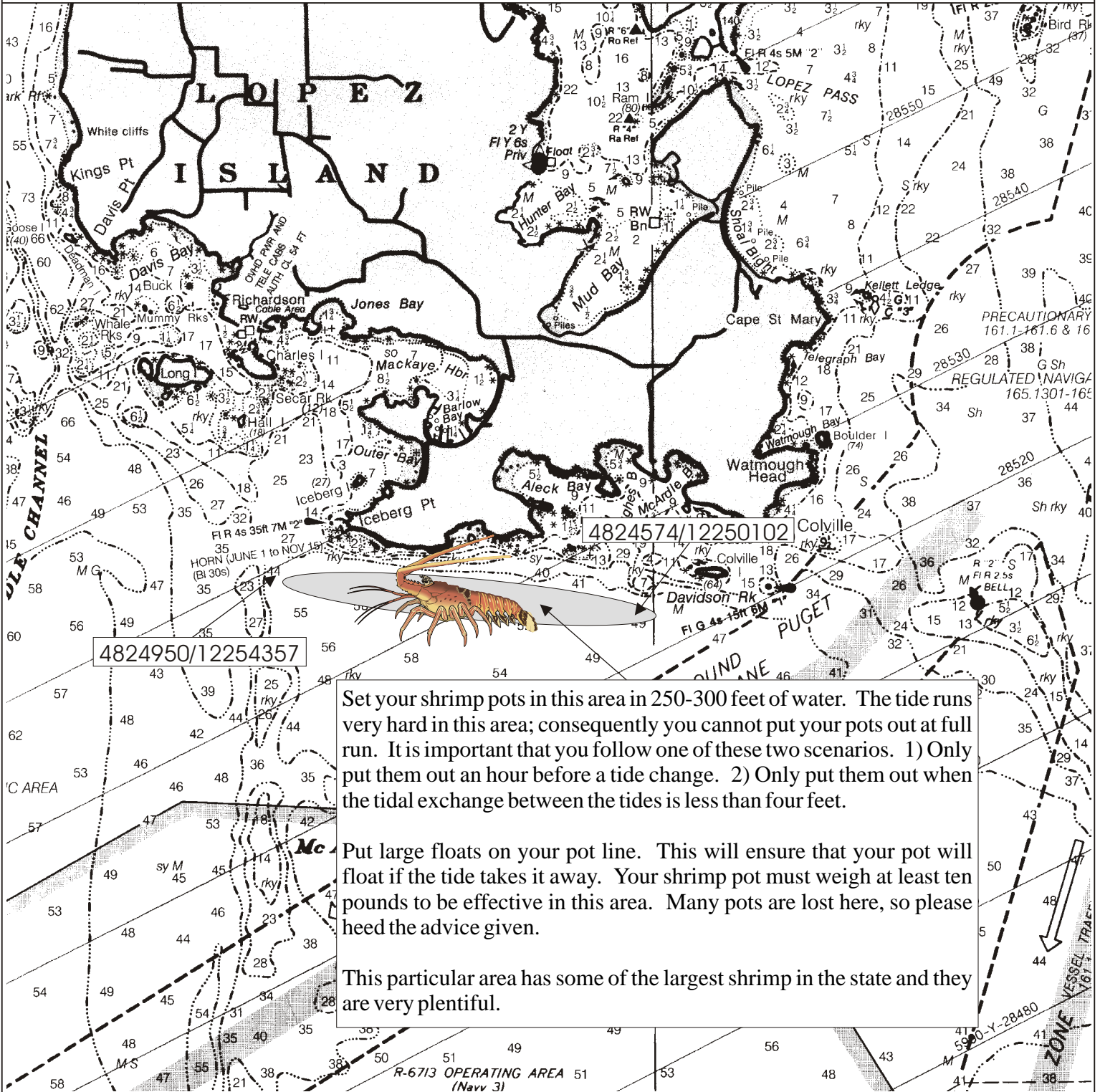


Fishing Maps

Maps For The Serious Angler

WDFW Shellfish Rules Hotline 1-866-880-5431



4824950/12254357

Set your shrimp pots in this area in 250-300 feet of water. The tide runs very hard in this area; consequently you cannot put your pots out at full run. It is important that you follow one of these two scenarios. 1) Only put them out an hour before a tide change. 2) Only put them out when the tidal exchange between the tides is less than four feet.

Put large floats on your pot line. This will ensure that your pot will float if the tide takes it away. Your shrimp pot must weigh at least ten pounds to be effective in this area. Many pots are lost here, so please heed the advice given.

This particular area has some of the largest shrimp in the state and they are very plentiful.

San Juan Shrimp

January	Feb	March	April	May	June	July	August	Sept	Oct	Nov	Dec
				Shrimp	Shrimp						