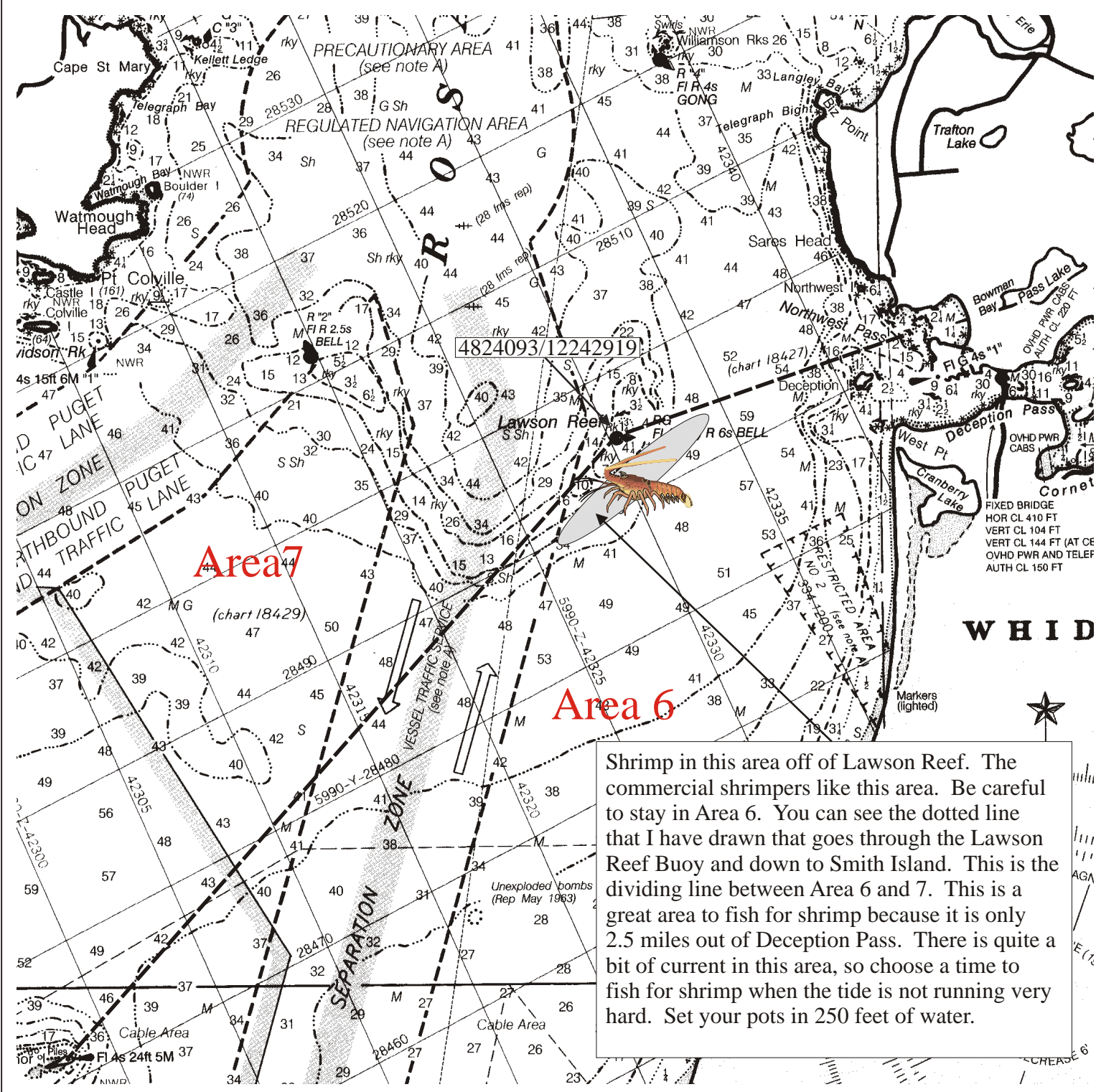


# Fishing Maps



Maps For The Serious Angler



Shrimp in this area off of Lawson Reef. The commercial shrimpers like this area. Be careful to stay in Area 6. You can see the dotted line that I have drawn that goes through the Lawson Reef Buoy and down to Smith Island. This is the dividing line between Area 6 and 7. This is a great area to fish for shrimp because it is only 2.5 miles out of Deception Pass. There is quite a bit of current in this area, so choose a time to fish for shrimp when the tide is not running very hard. Set your pots in 250 feet of water.

## Lawson Reef Shrimp

January	Feb	March	April	May	June	July	August	Sept	Oct	Nov	Dec
				Shrimp	Shrimp	Shrimp	Shrimp	Shrimp			