

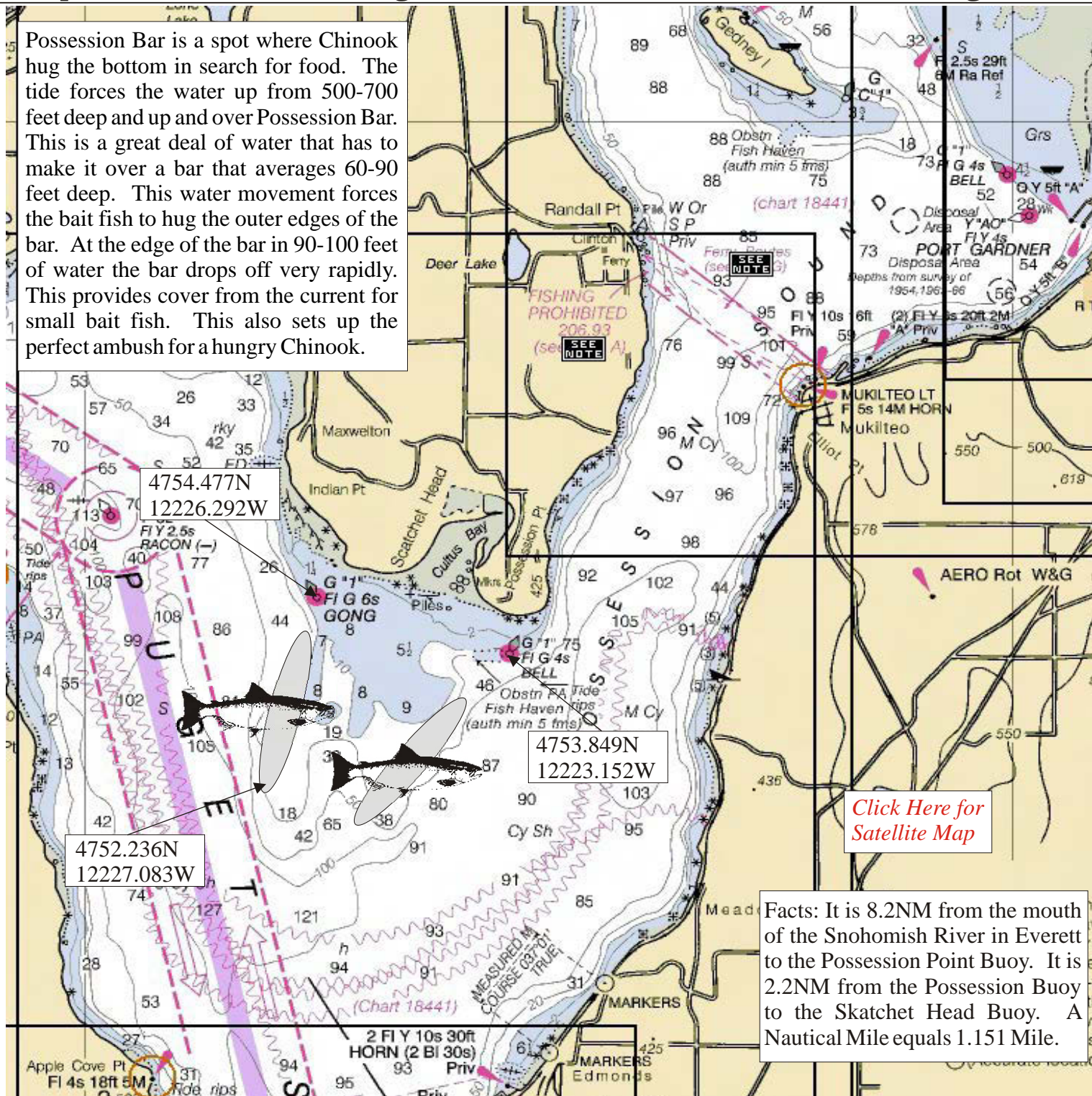
Fishing Maps



Maps For The Serious Angler

Not Intended for Navigation

Possession Bar is a spot where Chinook hug the bottom in search for food. The tide forces the water up from 500-700 feet deep and up and over Possession Bar. This is a great deal of water that has to make it over a bar that averages 60-90 feet deep. This water movement forces the bait fish to hug the outer edges of the bar. At the edge of the bar in 90-100 feet of water the bar drops off very rapidly. This provides cover from the current for small bait fish. This also sets up the perfect ambush for a hungry Chinook.



[Click Here for Satellite Map](#)

Facts: It is 8.2NM from the mouth of the Snohomish River in Everett to the Possession Point Buoy. It is 2.2NM from the Possession Buoy to the Skatchet Head Buoy. A Nautical Mile equals 1.151 Mile.

Possession Bar Chinook

January	Feb	March	April	May	June	July	August	Sept	Oct	Nov	Dec
Chinook	Chinook	Chinook	Chinook			Chinook	Chinook		Chinook	Chinook	Chinook